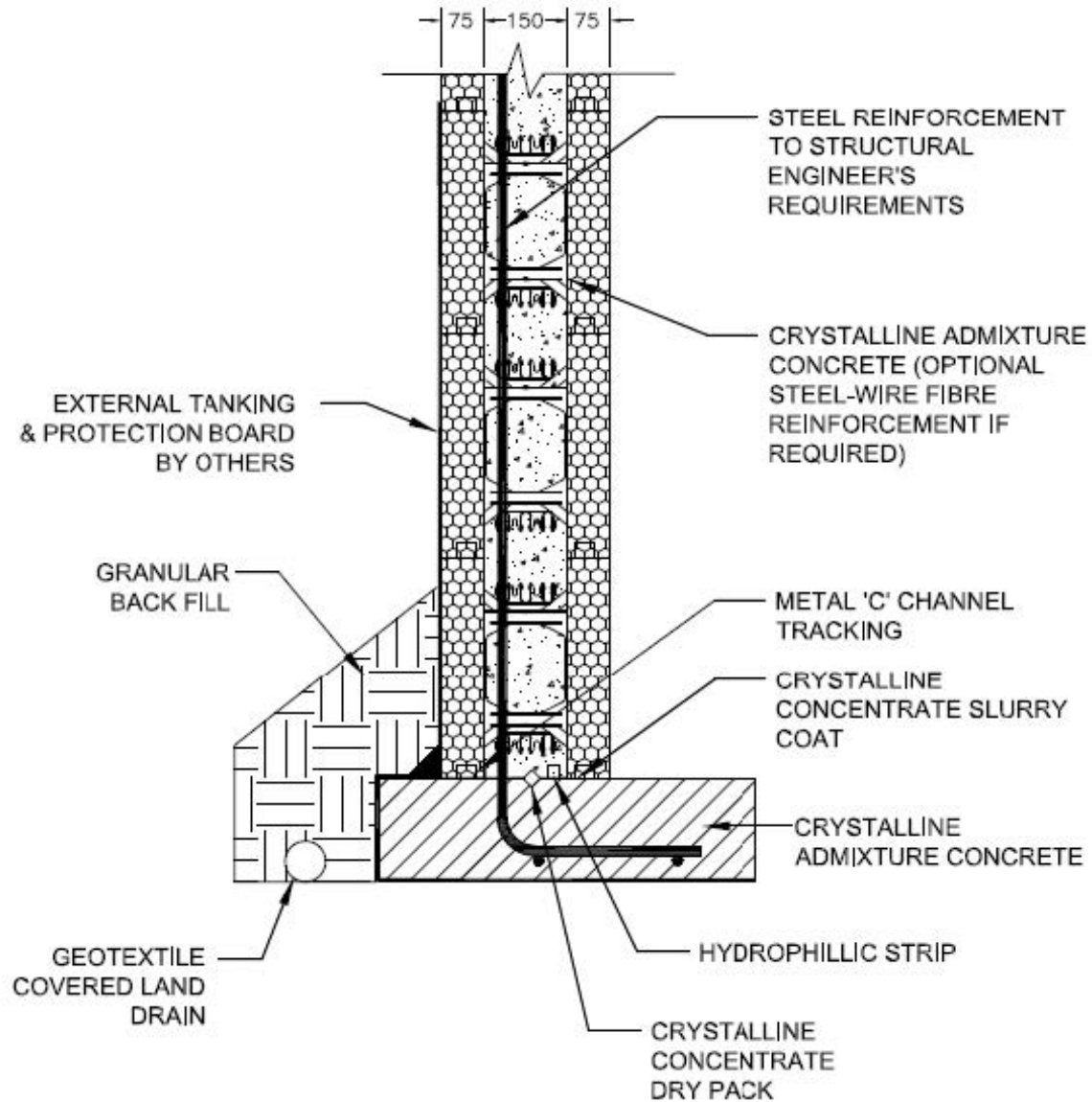


REBAR SIZE AND LOCATION
AS SPECIFIED BY THE
ENGINEER WHERE REQ'D

ALL DIMENSIONS
IN MM



www.amvicireland.com

AMVIC IRELAND LTD.
UNIT 11
ROSEMOUNT BUSINESS PARK
DUBLIN 11
D11Y382
IRELAND
TEL: 01 899 1883

WATERPROOF BASEMENT JOINT DETAIL
150mm Core, 75mm Insulation

Drawing Scale: NTS

Date: MAY'20

Revision: /

Drawing Number: 20-300-014

ALL DETAILS SHALL BE CONSTRUCTED IN ACCORDANCE WITH LOCAL BUILDING CODES AND PRACTICES. AMVIC IRELAND RESERVES THE RIGHT TO CHANGE INFORMATION SHOWN WITHOUT NOTICE.